

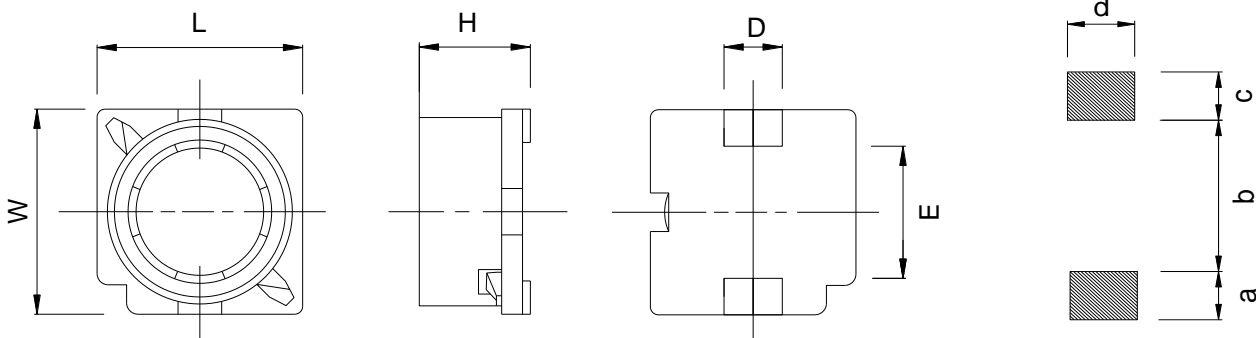
Product outline

- Magnetically shielded types.
- A wide range of product line up is available to meet various requirements.
- Excellent solderability and high heat resistance.
- For DC/DC converter applications.
- Ideally used in thin-screen TV, LCDs, AV equipment and other electronic devices.
- Custom design is also available.
- RoHS compliant.



Dimensions

Recommended land pattern



Unit: mm

Type	L	W	H	D	E	a	b	c	d	Packaging (pcs/reel)
SLF6028S	6.0	6.0	3.0 max.	2.1	4.0	1.5	4.0	1.5	2.2	1500
SLF6045S	6.0	6.0	4.8 max.	2.1	4.0	1.5	4.0	1.5	2.2	1000
SLF7028S	7.0	7.0	3.0 max.	2.1	4.9	1.5	4.9	1.5	2.2	1000
SLF7032S	7.0	7.0	3.4 max.	2.1	4.9	1.5	4.9	1.5	2.2	1000
SLF7045S	7.0	7.0	4.8 max.	2.1	4.9	1.5	4.9	1.5	2.2	1000
SLF7055S	7.0	7.0	5.8 max.	2.1	4.9	1.5	4.9	1.5	2.2	1000
SLF1045S	10.0	10.0	4.8 max.	3.0	6.0	2.5	5.6	2.5	3.2	750
SLF1255S	12.5	12.5	5.8 max.	3.0	8.5	2.5	8.6	2.5	3.2	500
SLF1265S	12.5	12.5	6.85 max.	3.0	8.5	2.5	8.6	2.5	3.2	500
SLF1275S	12.5	12.5	7.85 max.	3.0	8.5	2.5	8.6	2.5	3.2	500

Dimensions without tolerance are typical.

Product Identification

SLF 6028 S - 470 M C S
 (1) (2) (3) (4) (5) (6) (7)

(1) Product Series No.

(2) Dimension symbol.

6028=6.0x6.0x3.0mm (L x W x H)

(3) Internal control code.

(4) Inductance value.

100=10x10⁰ uH=10uH 2R2=2.2 uH

All specifications are subject to change without notice.

(5) Tolerance.

N=±30%, M=±20%, K=±10%

(6) Packing Style.

C=Carrier Tape, B=Bulk

(7) Characteristic parameter level

SLF6028S Electrical Characteristics

Part Number	Inductance (uH) ①	Inductance tolerance	DCR ±20% (mΩ) ②	Rated current (A) ③
SLF6028S-4R7MCS	4.7	±20%	28	1.65
SLF6028S-6R8MCS	6.8	±20%	35	1.55
SLF6028S-100MCS	10	±20%	52	1.35
SLF6028S-150MCS	15	±20%	74	1.05
SLF6028S-220MCS	22	±20%	100	0.80
SLF6028S-330MCS	33	±20%	140	0.70
SLF6028S-470MCS	47	±20%	205	0.60
SLF6028S-680MCS	68	±20%	285	0.50
SLF6028S-101MCS	100	±20%	420	0.40
SLF6028S-151MCS	150	±20%	640	0.35
SLF6028S-221MCS	220	±20%	970	0.27

SLF6045S Electrical Characteristics

Part Number	Inductance (uH) ①	Inductance tolerance	DCR ±30% (mΩ) ②	Rated current (A) ③
SLF6045S-1R5YCS	1.5	±30%	15	4.10
SLF6045S-2R2YCS	2.2	±30%	17	3.35
SLF6045S-3R3YCS	3.3	±30%	21	2.85
SLF6045S-4R7YCS	4.7	±30%	25	2.45
SLF6045S-6R8YCS	6.8	±30%	32	2.05
SLF6045S-100MCS	10	±20%	38	1.65
SLF6045S-150MCS	15	±20%	58	1.35
SLF6045S-220MCS	22	±20%	80	1.15

SLF7028S Electrical Characteristics

Part Number	Inductance (uH) ①	Inductance tolerance	DCR ±20% (mΩ) ②	Rated current (A) ③
SLF7028S-3R3MCS	3.3	±20%	25	1.65
SLF7028S-4R7MCS	4.7	±20%	35	1.55
SLF7028S-6R8MCS	6.8	±20%	58	1.35
SLF7028S-100MCS	10	±20%	80	1.15
SLF7028S-150MCS	15	±20%	100	0.90
SLF7028S-220MCS	22	±20%	170	0.77
SLF7028S-330MCS	33	±20%	230	0.66
SLF7028S-470MCS	47	±20%	330	0.55

SLF7032 Electrical Characteristics

Part Number	Inductance (uH) ①	Inductance tolerance	DCR ±20% (mΩ) ②	Rated current (A) ③
SLF7032S-3R3MCS	3.3	±20%	23	1.90
SLF7032S-4R7MCS	4.7	±20%	30	1.70
SLF7032S-6R8MCS	6.8	±20%	41	1.60
SLF7032S-100MCS	10	±20%	53	1.40
SLF7032S-150MCS	15	±20%	75	1.10
SLF7032S-220MCS	22	±20%	110	0.96
SLF7032S-330MCS	33	±20%	160	0.75
SLF7032S-470MCS	47	±20%	240	0.67
SLF7032S-680MCS	68	±20%	310	0.59
SLF7032S-101MCS	100	±20%	450	0.45
SLF7032S-151MCS	150	±20%	650	0.37
SLF7032S-221MCS	220	±20%	1050	0.29
SLF7032S-331MCS	330	±20%	1670	0.22
SLF7032S-471MCS	470	±20%	2050	0.20
SLF7032S-681MCS	680	±20%	3150	0.16
SLF7032S-102MCS	1000	±20%	4780	0.13

SLF7045S Electrical Characteristics

Part Number	Inductance (uH) ①	Inductance tolerance	DCR ±20% (mΩ) ②	Rated current (A) ③
SLF7045S-3R3MCS	3.3	±20%	19	2.35
SLF7045S-4R7MCS	4.7	±20%	28	2.05
SLF7045S-6R8MCS	6.8	±20%	37	1.75
SLF7045S-100MCS	10	±20%	45	1.35
SLF7045S-150MCS	15	±20%	50	1.15
SLF7045S-220MCS	22	±20%	60	0.92
SLF7045S-330MCS	33	±20%	90	0.84
SLF7045S-470MCS	47	±20%	120	0.77
SLF7045S-680MCS	68	±20%	170	0.61
SLF7045S-101MCS	100	±20%	245	0.51
SLF7045S-151MCS	150	±20%	335	0.41
SLF7045S-221MCS	220	±20%	500	0.34
SLF7045S-331MCS	330	±20%	700	0.26
SLF7045S-471MCS	470	±20%	1000	0.22
SLF7045S-681MCS	680	±20%	1450	0.20
SLF7045S-102MCS	1000	±20%	2250	0.14

SLF7055S Electrical Characteristics

Part Number	Inductance (uH) ①	Inductance tolerance	DCR ±30% (mΩ) ②	Rated current (A) ③
SLF7055S-1R5YCS	1.5	±30%	17	4.10
SLF7055S-2R2YCS	2.2	±30%	21	3.55
SLF7055S-3R3YCS	3.3	±30%	23	3.35
SLF7055S-4R7YCS	4.7	±30%	25	3.15
SLF7055S-6R8YCS	6.8	±30%	30	2.85
SLF7055S-100MCS	10	±20%	35	2.55
SLF7055S-150MCS	15	±20%	45	2.10
SLF7055S-220MCS	22	±20%	58	1.75

SLF1045S Electrical Characteristics

Part Number	Inductance (uH) ①	Inductance tolerance	DCR ±20% (mΩ) ②	Rated current (A) ③
SLF1045S-3R3YCS	3.3	±30%	16	3.78
SLF1045S-5R6MCS	5.6	±20%	21	3.27
SLF1045S-100MCS	10	±20%	36	2.55
SLF1045S-150MCS	15	±20%	47	2.24
SLF1045S-220MCS	22	±20%	59	1.94
SLF1045S-330MCS	33	±20%	81	1.63
SLF1045S-470MCS	47	±20%	96	1.43
SLF1045S-680MCS	68	±20%	135	1.22
SLF1045S-101MCS	100	±20%	195	1.02
SLF1045S-151MCS	150	±20%	345	0.81
SLF1045S-221MCS	220	±20%	465	0.66
SLF1045S-331MCS	330	±20%	675	0.55
SLF1045S-471MCS	470	±20%	1000	0.48
SLF1045S-681MCS	680	±20%	1580	0.39
SLF1045S-102MCS	1000	±20%	2780	0.30
SLF1045S-152MCS	1500	±20%	3380	0.22

SLF1255S Electrical Characteristics

Part Number	Inductance (uH) ①	Inductance tolerance	DCR ±20% (mΩ) ②	Rated current (A) ③
SLF1255S-6R0YCS	6.0	±30%	16	3.65
SLF1255S-100MCS	10	±20%	20	3.45
SLF1255S-150MCS	15	±20%	25	2.85
SLF1255S-220MCS	22	±20%	33	2.35
SLF1255S-330MCS	33	±20%	40	1.95
SLF1255S-470MCS	47	±20%	60	1.65
SLF1255S-680MCS	68	±20%	80	1.35
SLF1255S-101MCS	100	±20%	110	1.15
SLF1255S-151MCS	150	±20%	185	0.90
SLF1255S-221MCS	220	±20%	260	0.75
SLF1255S-331MCS	330	±20%	400	0.60
SLF1255S-471MCS	470	±20%	500	0.50
SLF1255S-681MCS	680	±20%	750	0.45
SLF1255S-102MCS	1000	±20%	1100	0.35
SLF1255S-152MCS	1500	±20%	1700	0.30

All specifications are subject to change without notice.

SLF1265S Electrical Characteristics

Part Number	Inductance (uH) ①	Inductance tolerance	DCR ±20% (mΩ) ②	Rated current (A) ③
SLF1265S-2R0YCS	2.0	±30%	11	6.35
SLF1265S-4R2YCS	4.2	±30%	14	5.60
SLF1265S-7R0YCS	7.0	±30%	17	5.10
SLF1265S-100MCS	10	±20%	19	4.90
SLF1265S-150MCS	15	±20%	22	4.30
SLF1265S-220MCS	22	±20%	30	3.55
SLF1265S-330MCS	33	±20%	40	2.85
SLF1265S-470MCS	47	±20%	55	2.45
SLF1265S-680MCS	68	±20%	77	2.10
SLF1265S-101MCS	100	±20%	120	1.65
SLF1265S-221MCS	220	±20%	270	1.05

SLF1275S Electrical Characteristics

Part Number	Inductance (uH) ①	Inductance tolerance	DCR ±20% (mΩ) ②	Rated current (A) ③
SLF1275S-1R2YCS	1.2	±30%	6.5	8.37
SLF1275S-2R7YCS	2.7	±30%	9.0	7.14
SLF1275S-3R9YCS	3.9	±30%	10	6.84
SLF1275S-5R6YCS	5.6	±30%	11	6.43
SLF1275S-6R8YCS	6.8	±30%	12.5	6.02
SLF1275S-100MCS	10	±20%	15	5.51
SLF1275S-150MCS	15	±20%	18	4.80
SLF1275S-220MCS	22	±20%	26	4.08
SLF1275S-330MCS	33	±20%	39	3.27
SLF1275S-470MCS	47	±20%	52	2.76
SLF1275S-680MCS	68	±20%	77	2.04
SLF1275S-101MCS	100	±20%	120	1.94
SLF1275S-151MCS	150	±20%	170	1.53
SLF1275S-221MCS	220	±20%	250	1.33

① Inductance tested at 100kHz, 0.1 Vrms for Inductance $L < 100\mu\text{H}$, 1kHz, 0.5 Vrms for Inductance $L \geq 100\mu\text{H}$ using an Agilent/HP 4192A or equivalent.

② DCR measured on a micro-ohmmeter.

③ Rated current: the DC current at which the inductance decreases by 25% of its nominal value or at which $\Delta t = 40^\circ\text{C}$, whichever is lower ($T_a = 20^\circ\text{C}$).