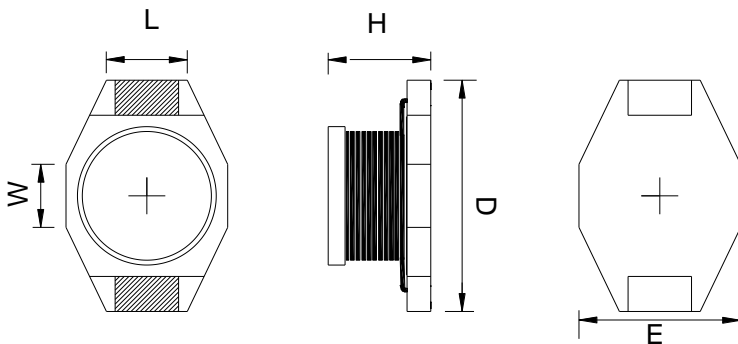


## Product Outline

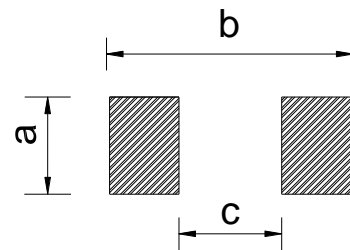
- Excellent saturation current handling to be up to 6.94A.
- Low DC resistance keeps power losses to a minimum.
- For DC-DC converter applications.
- Ideally used in thin-screen TV, LCDs, AV equipment and other electronic devices.
- Custom design is also available.
- RoHS compliant.



## Dimensions



## Recommended Land Pattern



Unit: mm

Type	L	W	H	D	E	a	b	c	Packaging (pcs/reel)
SBF3316M	3.2	3.7	5.2 max.	12.95	9.4	2.8	13.2	7.4	1000
SBF3340M	3.2	3.7	11.43 max.	12.95	9.4	2.8	13.2	7.4	350

Dimensions without tolerance are typical

## Product Identification

SBF   3316   M   -   100   M   T   01

(1)      (2)      (3)      (4)      (5)      (6)      (7)

(1) Product Series No.

(2) Dimension symbol.

3316=12.95 x 5.2mm (Dx H)

(3) Internal control code.

(4) Inductance value.

100=10×10<sup>0</sup> uH=10 uH   2R2=2.2 uH

(5) Tolerance.

M=±20% ,Y=±30% ,P=±35%

(6) Packing Style, T=Taping, B=Bulk

(7) Characteristic parameter level.

### SBF3316M Electrical Characteristics

Part Number	Inductance (uH) ①	Inductance tolerance	DCR max. (mΩ) ②	Rated current (A) ③
SBF3316M-1R0MT01	1.0	±20%	9.0	6.8
SBF3316M-1R5MT01	1.5	±20%	10	6.4
SBF3316M-2R2MT01	2.2	±20%	11.9	6.1
SBF3316M-3R3MT01	3.3	±20%	15.0	5.4
SBF3316M-4R7MT01	4.7	±20%	17.8	4.8
SBF3316M-6R8MT01	6.8	±20%	26.8	4.4
SBF3316M-100MT01	10	±20%	37.5	3.88
SBF3316M-150MT01	15	±20%	45.8	3.06
SBF3316M-220MT01	22	±20%	84.7	2.35
SBF3316M-330MT01	33	±20%	99.5	2.04
SBF3316M-470MT01	47	±20%	140	1.63
SBF3316M-680MT01	68	±20%	195	1.43
SBF3316M-101MT01	100	±20%	274	1.22
SBF3316M-151MT01	150	±20%	398	1.0
SBF3316M-221MT01	220	±20%	608	0.80
SBF3316M-331MT01	330	±20%	1015	0.60
SBF3316M-471MT01	470	±20%	1265	0.50
SBF3316M-681MT01	680	±20%	2015	0.40
SBF3316M-102MT01	1000	±20%	2995	0.30
SBF3316M-152MT01	1500	±20%	4490	0.27
SBF3316M-332MT01	3300	±20%	8968	0.17

### SBF3340M Electrical Characteristics

Part Number	Inductance (uH) ①	Inductance tolerance	DCR max. (mΩ) ②	Rated current (A) ③
SBF3340M-100MT01	10	±20%	40	3.57
SBF3340M -150MT01	15	±20%	50.0	3.06
SBF3340M -220MT01	22	±20%	66.0	2.55
SBF3340M -330MT01	33	±20%	79.8	2.04
SBF3340M -470MT01	47	±20%	109	1.63
SBF3340M -680MT01	68	±20%	168	1.22
SBF3340M -101MT01	100	±20%	220	1.22
SBF3340M -151MT01	150	±20%	340	0.92
SBF3340M -221MT01	220	±20%	438	0.71
SBF3340M -331MT01	330	±20%	698	0.61
SBF3340M -471MT01	470	±20%	948	0.31
SBF3340M -681MT01	680	±20%	1150	0.20
SBF3340M -102MT01	1000	±20%	1995	0.10

① Inductance tested at 100kHz, 0.1 Vrms using an Agilent/HP 4192A or equivalent.

② DCR measured on a micro-ohmmeter.

③ Rated current: The DC current at which the inductance decreases by 10% of its nominal value or at which  $\Delta t=40^{\circ}\text{C}$ , whichever is lower( $T_a=20^{\circ}\text{C}$ ).