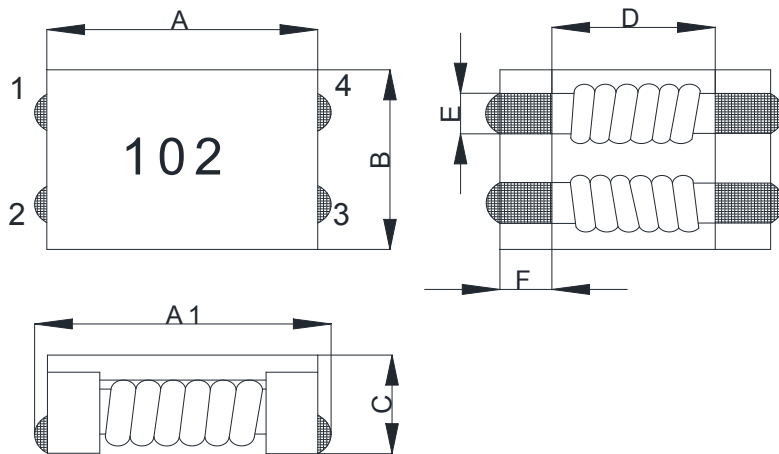


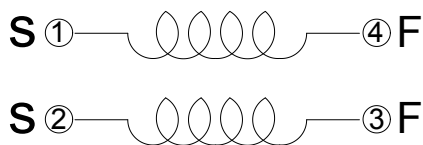
1. Dimensions (mm)



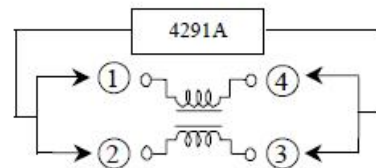
A	A1	B	C	D	E	F
9.0±0.5	9.5±0.5	7.0±0.5	4.8Max	5.6 typ.	1.5 typ.	1.7 typ.

Dimensions do not include solder on the Pins

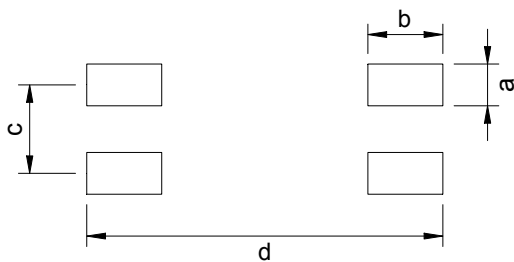
2. Schematics (Bottom View)



Common Mode
 Impedance TEST



3.Recommended Land Pattern



Symbol	Dimensions(mm)
a	2.00
b	2.75
c	3.50
d	10.50

**RoHS
 Compliant**

4. Electrical Characteristics

Part Number	Impedance ① Ω at 100MHz	Impedance ① Ω at 100MHz	DCR ② (mΩ) max	Insulation Resistance (MΩ) Min	Rated Voltage (V) max.	Rated ③ Current (A)
CMSC9070S-301T01	300 typ.	225 min.	6	10	80	6.0
CMSC9070S-501T01	600 typ.	450 min.	8	10	80	5.5
CMSC9070S-701T01	700 typ.	500 min.	10	10	80	5.0
CMSC9070S-102T01	1000 typ.	750 min.	13	10	80	4.0
CMSC9070S-222T01	2200 typ.	1700 min.	50	10	80	3.0
CMSC9070S-272T01	2700 typ.	2000 min.	80	10	80	2.0

① Inductance measured on a 4991A Keysight Technologies or equivalent.

② DCR measured on a micro-ohmmeter (Single winding) .

③ I_{rms}: The DC current at which Δt=40°C,measure pin1 to 2,short pin3,4 (at 25°C).

5.Packaging

Packaging Quantity: 700 pcs per Reel.