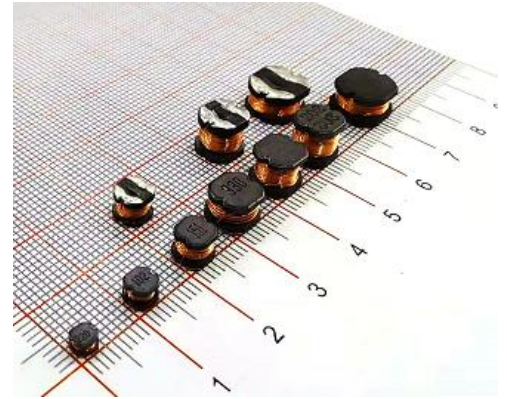
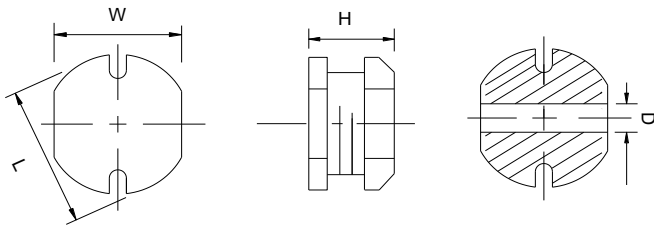


Product Outline

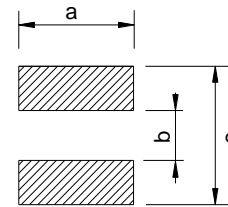
- Inductance is up to 8.0mH
- A wide range of product line up is available to meet the various requirements.
- For DC/DC converter applications and power chokes.
- Ideally used in PDA, HDD,DSC/DVC,portable DVD, car navigation, LED lighting,smart screen, power module,etc.
- Custom design is also available.
- RoHS compliant.



Dimensions



Recommended Land Pattern



RoHS Compliant

Unit: mm

Type	L	W	H	D	a	b	c	Packaging (pcs/reel)
CD3521S	3.5	3.0	2.4 max.	1.0	3.5	0.8	4.0	3000
CD4532S	4.5	4.0	3.5 max.	1.6	4.5	1.5	5.0	2000
CD5830S	5.8	5.2	3.3 max.	2.0	5.5	1.7	6.0	2000
CD5845S	5.8	5.2	4.8 max.	2.0	5.5	1.7	6.0	1500
CD5845H	5.8	5.2	4.8 max.	2.0	5.5	1.7	6.0	1500
CD7850S	7.8	7.0	5.3 max.	2.5	7.5	2.0	8.0	1000
CD7850H	7.8	7.0	5.3 max.	2.5	7.5	2.0	8.0	1000
CD7862H	7.8	7.0	6.5 max.	2.6	7.5	2.0	8.0	800
CD7870H	7.8	7.0	7.3 max.	2.6	7.5	2.0	8.0	800
CD1054S	10.0	9.0	5.7 max.	3.0	9.5	2.5	10.0	750

Dimensions without tolerance are typical.

Product Identification

CD 7850 S - 470 M C S
(1) (2) (3) (4) (5) (6) (7)

(1) Product Series No

(2) Dimension symbol

7850=7.8 x 5.0mm (L x H)

(3) Internal control code

(4) Inductance value

470=47×10⁰ uH=47 uH 2R2=2.2 uH

(5) Tolerance

M=±20% , Y=±30% , P=±35%

(6) Packing Style, C=Taping, B=Bulk

(7) Characteristic parameter level

All specifications are subject to change without notice.

CD3521S Electrical Characteristics

Part Number	Inductance (uH) ①	Inductance tolerance	DCR max. (mΩ) ②	Rated current (A) ③
CD3521S-1R0MCS	1.0	±20%	50	1.85
CD3521S-1R5MCS	1.5	±20%	60	1.80
CD3521S-2R2MCS	2.2	±20%	80	1.60
CD3521S-3R3MCS	3.3	±20%	100	1.40
CD3521S-3R9MCS	3.9	±20%	150	1.30
CD3521S-4R7MCS	4.7	±20%	165	1.25
CD3521S-5R6MCS	5.6	±20%	185	1.20
CD3521S-6R8MCS	6.8	±20%	210	1.10
CD3521S-8R2MCS	8.2	±20%	240	1.05
CD3521S-100KCS	10	±10%	350	0.76
CD3521S-150KCS	15	±10%	500	0.64
CD3521S-220KCS	22	±10%	650	0.50
CD3521S-330KCS	33	±10%	850	0.38
CD3521S-390KCS	39	±10%	1000	0.36
CD3521S-470KCS	47	±10%	1600	0.33
CD3521S-560KCS	56	±10%	1650	0.29
CD3521S-680KCS	68	±10%	1850	0.28
CD3521S-820KCS	82	±10%	2100	0.25
CD3521S-101KCS	100	±10%	2200	0.22

CD4532S Electrical Characteristics

Part Number	Inductance (uH) ①	Inductance tolerance	DCR max. (mΩ) ②	Rated current (A) ③
CD4532S-1R0MCS	1.0	±20%	45	3.50
CD4532S-2R2MCS	2.2	±20%	70	2.40
CD4532S-2R7MCS	2.7	±20%	75	2.30
CD4532S-3R3MCS	3.3	±20%	85	2.25
CD4532S-3R9MCS	3.9	±20%	90	1.70
CD4532S-4R7MCS	4.7	±20%	105	1.65
CD4532S-5R6MCS	5.6	±20%	120	1.60
CD4532S-6R8MCS	6.8	±20%	130	1.40
CD4532S-8R2MCS	8.2	±20%	145	1.30
CD4532S-100KCS	10	±10%	180	1.10
CD4532S-120KCS	12	±10%	210	1.00
CD4532S-150KCS	15	±10%	235	0.85
CD4532S-180KCS	18	±10%	330	0.80
CD4532S-220KCS	22	±10%	360	0.70
CD4532S-270KCS	27	±10%	520	0.65
CD4532S-330KCS	33	±10%	540	0.60
CD4532S-390KCS	39	±10%	580	0.55
CD4532S-470KCS	47	±10%	840	0.48
CD4532S-560KCS	56	±10%	930	0.46
CD4532S-680KCS	68	±10%	1110	0.44
CD4532S-820KCS	82	±20%	1250	0.42
CD4532S-101KCS	100	±10%	1400	0.40
CD4532S-121KCS	120	±10%	1500	0.38
CD4532S-151KCS	150	±10%	2000	0.35
CD4532S-181KCS	180	±10%	2120	0.30
CD4532S-221KCS	220	±10%	2460	0.27
CD4532S-271KCS	270	±10%	2980	0.23
CD4532S-331KCS	330	±10%	4500	0.20
CD4532S-471KCS	470	±10%	5500	0.16
CD4532S-561KCS	560	±10%	6000	0.14
CD4532S-681KCS	680	±10%	6800	0.13

All specifications are subject to change without notice.

CD5830S Electrical Characteristics

Part Number	Inductance (uH) ①	Inductance tolerance	DCR max. (mΩ) ②	Rated current (A) ③
CD5830S-1R0MCS	1.0	±20%	28	4.50
CD5830S-1R2MCS	1.2	±20%	30	4.30
CD5830S-1R5MCS	1.5	±20%	34	4.20
CD5830S-2R2MCS	2.2	±20%	50	4.00
CD5830S-2R7MCS	2.7	±20%	55	3.40
CD5830S-3R3MCS	3.3	±20%	60	3.00
CD5830S-4R7MCS	4.7	±20%	70	2.80
CD5830S-5R6MCS	5.6	±20%	83	2.60
CD5830S-6R8MCS	6.8	±20%	100	2.50
CD5830S-8R2MCS	8.2	±20%	120	2.30
CD5830S-100KCS	10	±10%	130	2.00
CD5830S-150KCS	15	±10%	182	1.60
CD5830S-220KCS	22	±10%	280	1.20
CD5830S-270KCS	27	±10%	300	1.15
CD5830S-330KCS	33	±10%	410	1.10
CD5830S-390KCS	39	±10%	490	1.00
CD5830S-470KCS	47	±10%	550	0.80
CD5830S-680KCS	68	±10%	630	0.75
CD5830S-820KCS	82	±10%	750	0.70
CD5830S-101KCS	100	±10%	925	0.65
CD5830S-151KCS	150	±10%	1600	0.60
CD5830S-181KCS	180	±10%	1650	0.50
CD5830S-221KCS	220	±10%	1860	0.40
CD5830S-331KCS	330	±10%	3100	0.25
CD5830S-471KCS	470	±10%	4300	0.20
CD5830S-561KCS	560	±10%	6470	0.18
CD5830S-681KCS	680	±10%	7320	0.16
CD5830S-821KCS	820	±10%	8124	0.14
CD5830S-102KCS	1000	±10%	8580	0.12

CD5845S Electrical Characteristics

Part Number	Inductance (uH) ①	Inductance tolerance	DCR max. (mΩ) ②	Rated current (A) ③
CD5845S-R33NCS	0.33	±30%	11	5.00
CD5845S-R47NCS	0.47	±30%	12	4.80
CD5845S-1R0MCS	1.0	±20%	25	3.50
CD5845S-1R5MCS	1.5	±20%	25	3.30
CD5845S-2R2MCS	2.2	±20%	28	3.20
CD5845S-2R7MCS	2.7	±20%	30	3.00
CD5845S-3R3MCS	3.3	±20%	35	2.50
CD5845S-3R9MCS	3.9	±20%	38	2.40
CD5845S-4R7MCS	4.7	±20%	40	2.30
CD5845S-5R0MCS	5.0	±20%	49	2.20
CD5845S-5R6MCS	5.6	±20%	50	2.10
CD5845S-6R8MCS	6.8	±20%	55	2.00
CD5845S-7R2MCS	7.2	±20%	70	1.80
CD5845S-8R2MCS	8.2	±20%	90	1.70
CD5845S-100KCS	10	±10%	100	1.65
CD5845S-120KCS	12	±10%	120	1.55
CD5845S-150KCS	15	±10%	140	1.40
CD5845S-180KCS	18	±10%	150	1.25
CD5845S-200KCS	20	±10%	160	1.15
CD5845S-220KCS	22	±10%	180	1.10
CD5845S-270KCS	27	±10%	200	0.95
CD5845S-330KCS	33	±10%	220	0.90
CD5845S-390KCS	39	±10%	300	0.80
CD5845S-470KCS	47	±10%	350	0.75
CD5845S-560KCS	56	±10%	400	0.70
CD5845S-680KCS	68	±10%	450	0.65
CD5845S-820KCS	82	±10%	600	0.60
CD5845S-101KCS	100	±10%	700	0.55
CD5845S-121KCS	120	±10%	850	0.45
CD5845S-151KCS	150	±10%	1100	0.43
CD5845S-181KCS	180	±10%	1350	0.40
CD5845S-221KCS	220	±10%	1550	0.35
CD5845S-301KCS	300	±10%	1690	0.32
CD5845S-331KCS	330	±10%	1760	0.30
CD5845S-391KCS	390	±10%	1890	0.27
CD5845S-471KCS	470	±10%	2500	0.25
CD5845S-511KCS	510	±10%	2700	0.22
CD5845S-561KCS	560	±10%	2870	0.20
CD5845S-681KCS	680	±10%	3500	0.18
CD5845S-821KCS	820	±10%	5200	0.17

All specifications are subject to change without notice.

CD5845H Electrical Characteristics

Part Number	Inductance (uH) ①	Inductance tolerance	DCR max. (mΩ) ②	Rated current (A) ③
CD5845H-102KCS	1000	±10%	6000	0.25
CD5845H-152KCS	1500	±10%	9000	0.22
CD5845H-182KCS	1800	±10%	11700	0.19
CD5845H-202KCS	2000	±10%	13000	0.18
CD5845H-222KCS	2200	±10%	13800	0.17
CD5845H-252KCS	2500	±10%	14000	0.16
CD5845H-302KCS	3000	±10%	20000	0.15
CD5845H-402KCS	4000	±10%	23000	0.12
CD5845H-502KCS	5000	±10%	35000	0.12

CD7850S Electrical Characteristics

Part Number	Inductance (uH) ①	Inductance tolerance	DCR max. (mΩ) ②	Rated current (A) ③
CD7850S-1R0MCS	1.0	±20%	15	5.80
CD7850S-1R5MCS	1.5	±20%	17	5.50
CD7850S-2R2MCS	2.2	±20%	18	5.20
CD7850S-2R7MCS	2.7	±20%	23	5.00
CD7850S-3R3MCS	3.3	±20%	25	4.80
CD7850S-3R9MCS	3.9	±20%	27	4.20
CD7850S-4R7MCS	4.7	±20%	28	4.00
CD7850S-5R6MCS	5.6	±20%	30	3.80
CD7850S-6R0MCS	6.0	±20%	32	3.20
CD7850S-6R8MCS	6.8	±20%	36	3.00
CD7850S-8R2MCS	8.2	±20%	42	2.70
CD7850S-100KCS	10	±10%	70	2.55
CD7850S-120KCS	12	±10%	80	2.40
CD7850S-150KCS	15	±10%	90	2.00
CD7850S-180KCS	18	±10%	100	1.95
CD7850S-220KCS	22	±10%	110	1.70
CD7850S-270KCS	27	±10%	120	1.55
CD7850S-330KCS	33	±10%	130	1.40
CD7850S-390KCS	39	±10%	150	1.35
CD7850S-470KCS	47	±10%	190	1.25
CD7850S-500KCS	50	±10%	200	1.20
CD7850S-560KCS	56	±10%	230	1.10
CD7850S-680KCS	68	±10%	250	1.00
CD7850S-820KCS	82	±10%	300	0.95
CD7850S-850KCS	85	±10%	320	0.90
CD7850S-101KCS	100	±10%	400	0.78
CD7850S-121KCS	120	±10%	450	0.73
CD7850S-151KCS	150	±10%	600	0.70
CD7850S-181KCS	180	±10%	700	0.60
CD7850S-201KCS	200	±10%	900	0.58
CD7850S-221KCS	220	±10%	950	0.55
CD7850S-261KCS	260	±10%	980	0.53
CD7850S-271KCS	270	±10%	1100	0.50
CD7850S-331KCS	330	±10%	1250	0.45
CD7850S-391KCS	390	±10%	1750	0.40
CD7850S-471KCS	470	±10%	1950	0.35
CD7850S-561KCS	560	±10%	1980	0.32
CD7850S-681KCS	680	±10%	2180	0.31
CD7850S-821KCS	820	±10%	2300	0.30

All specifications are subject to change without notice.

CD7850H Electrical Characteristics

Part Number	Inductance (uH) ①	Inductance tolerance	DCR max. (mΩ) ②	Rated current (A) ③
CD7850H-102KCS	1000	±10%	5300	0.39
CD7850H-152KCS	1500	±10%	7500	0.36
CD7850H-182KCS	1800	±10%	7800	0.32
CD7850H-202KCS	2000	±10%	9000	0.30
CD7850H-222KCS	2200	±10%	9800	0.28
CD7850H-252KCS	2500	±10%	11500	0.27
CD7850H-302KCS	3000	±10%	12200	0.27
CD7850H-332KCS	3300	±10%	14500	0.24
CD7850H-402KCS	4000	±10%	17000	0.20
CD7850H-472KCS	4700	±10%	18500	0.19
CD7850H-502KCS	5000	±10%	22000	0.18
CD7850H-602KCS	6000	±10%	25000	0.17
CD7850H-682KCS	6800	±10%	28000	0.16
CD7850H-802KCS	8000	±10%	36000	0.15

CD7862H Electrical Characteristics

Part Number	Inductance (uH) ①	Inductance tolerance	DCR max. (mΩ) ②	Rated current (A) ③
CD7862H-701KCS	700	±10%	3000	0.68
CD7862H-102KCS	1000	±10%	3500	0.56
CD7862H-152KCS	1500	±10%	6000	0.45
CD7862H-182KCS	1800	±10%	6200	0.42
CD7862H-202KCS	2000	±10%	6700	0.40
CD7862H-302KCS	3000	±10%	11500	0.30

CD7870H Electrical Characteristics

Part Number	Inductance (uH) ①	Inductance tolerance	DCR max. (mΩ) ②	Rated current (A) ③
CD7870H-701KCS	700	±10%	3000	0.70
CD7870H-801KCS	800	±10%	3100	0.65
CD7870H-821KCS	820	±10%	3200	0.64
CD7870H-102KCS	1000	±10%	3550	0.58
CD7870H-102KCS	1200	±10%	4100	0.55
CD7870H-152KCS	1500	±10%	6200	0.47
CD7870H-182KCS	1800	±10%	6300	0.45
CD7870H-202KCS	2000	±10%	7380	0.43
CD7870H-222KCS	2200	±10%	7800	0.40
CD7870H-252KCS	2500	±10%	8250	0.38
CD7870H-302KCS	3000	±10%	12000	0.37
CD7870H-332KCS	3300	±10%	12500	0.34
CD7870H-402KCS	4000	±10%	15000	0.30

CD1054S Electrical Characteristics

Part Number	Inductance (uH) ①	Inductance tolerance	DCR max. (mΩ) ②	Rated current max. (A) ③
CD1054S-1R0MCS	1.0	±20%	10	8.00
CD1054S-2R2MCS	2.2	±20%	15	7.20
CD1054S-3R3MCS	3.3	±20%	18	7.00
CD1054S-4R7MCS	4.7	±20%	20	6.00
CD1054S-6R2MCS	6.2	±20%	22	5.00
CD1054S-8R2MCS	8.2	±20%	50	4.00
CD1054S-100KCS	10	±10%	60	3.80
CD1054S-120KCS	12	±10%	70	3.40
CD1054S-150KCS	15	±10%	80	2.90
CD1054S-180KCS	18	±10%	90	2.65
CD1054S-220KCS	22	±10%	100	2.50
CD1054S-270KCS	27	±10%	110	2.25
CD1054S-330KCS	33	±10%	120	2.00
CD1054S-390KCS	39	±10%	130	1.90
CD1054S-470KCS	47	±10%	150	1.70
CD1054S-560KCS	56	±10%	190	1.60
CD1054S-680KCS	68	±10%	220	1.45
CD51054S-820KCS	82	±10%	250	1.30
CD1054S-101KCS	100	±10%	330	1.15
CD1054S-121KCS	120	±10%	400	1.00
CD1054S-151KCS	150	±10%	450	0.95
CD1054S-181KCS	180	±10%	600	0.85
CD1054S-221KCS	220	±10%	700	0.75
CD1054S-271KCS	270	±10%	950	0.70
CD1054S-331KCS	330	±10%	1100	0.60
CD1054S-391KCS	390	±10%	1200	0.55
CD1045S-471KCS	470	±10%	1450	0.50
CD1054S-561KCS	560	±10%	1900	0.48
CD1054S-621KCS	620	±10%	2000	0.46
CD1054S-681KCS	680	±10%	2250	0.45
CD1054S-821KCS	820	±10%	2500	0.40

Notes:

- ① Inductance tested at 100kHz, 0.5 Vrms for Inductance $L < 100\mu\text{H}$, 1kHz, 0.5 Vrms for Inductance $L \geq 100\mu\text{H}$ using an Agilent/HP 4192A or equivalent.
- ② DCR measured on a micro-ohmmeter.
- ③ Rated current: The DC current at which the inductance decreases by 10% of its nominal value or at which $\Delta t = 40^\circ\text{C}$, whichever is lower ($T_a = 20^\circ\text{C}$).